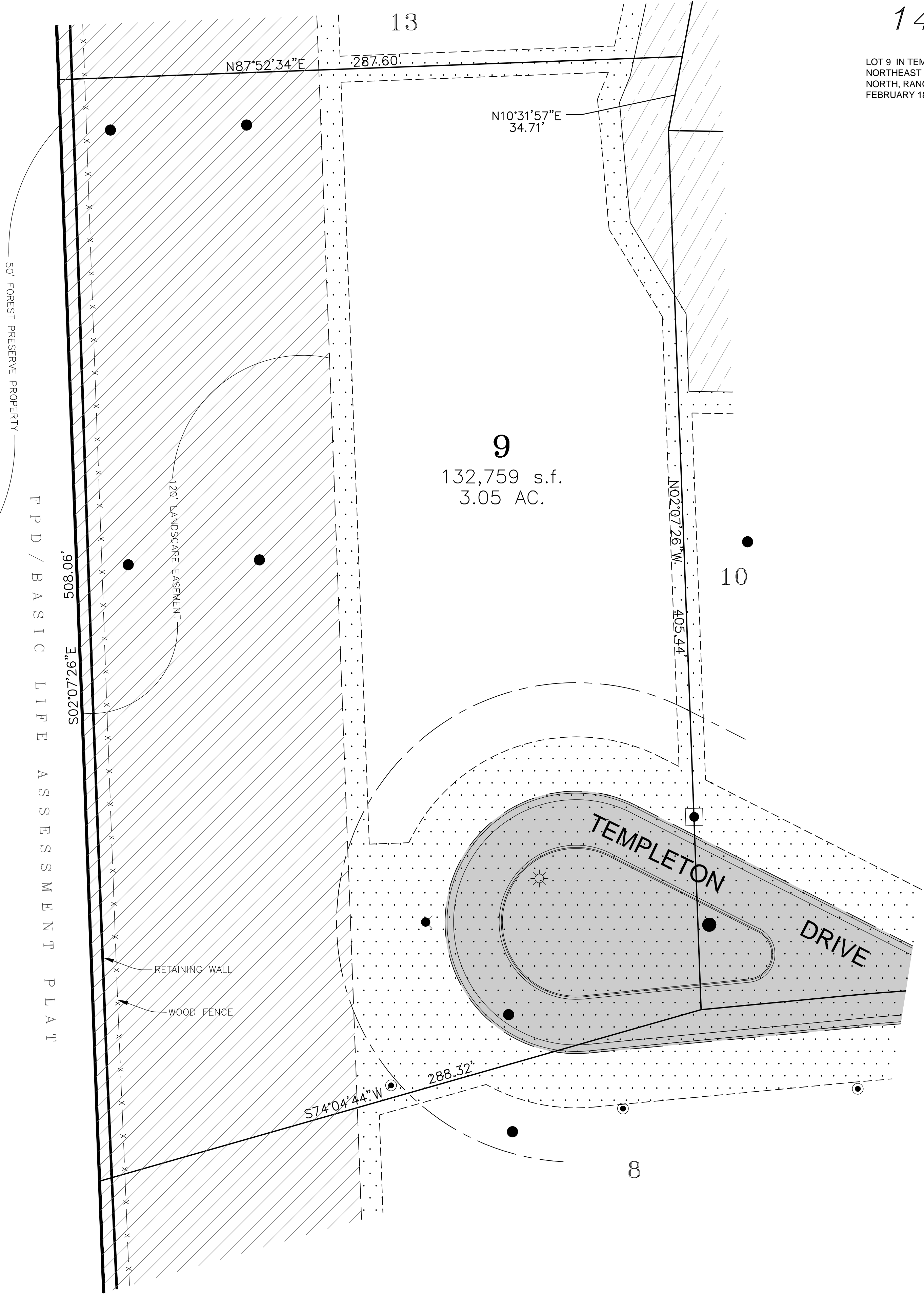
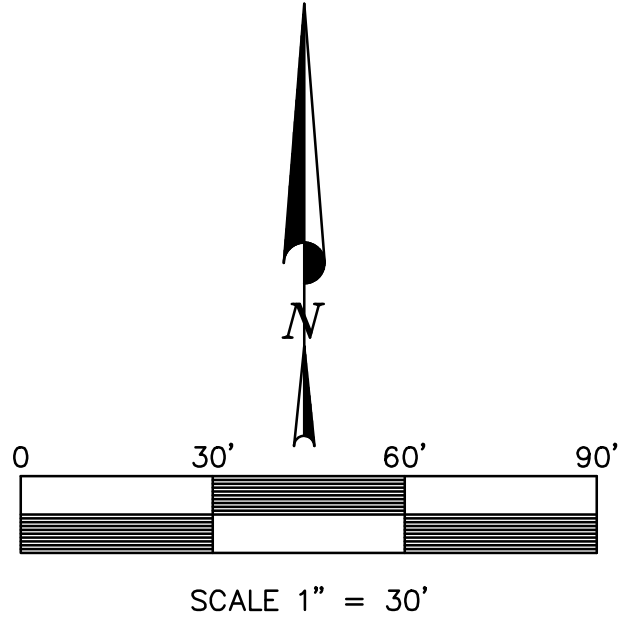


# 14 TEMPLETON DRIVE

LOT 9 IN TEMPLETON RESERVE PLAT OF SUBDIVISION, BEING A SUBDIVISION OF THOSE PARTS OF THE NORTHEAST AND SOUTHEAST QUARTERS OF THE SOUTHWEST QUARTER OF SECTION 35, ALL IN TOWNSHIP 39 NORTH, RANGE 11 EAST OF THE THIRD PRINCIPAL MERIDIAN, ACCORDING TO THE PLAT THEREOF RECORDED FEBRUARY 18, 2014 AS DOCUMENT NUMBER R2014-013643, ALL IN DUPAGE COUNTY, ILLINOIS.



ROBERT KINGERY HIGHWAY (ILL. RTE. 83)  
(HEREFORETO DEDICATED, 200.0' RIGHT-OF-WAY)

50' FOREST PRESERVE PROPERTY  
PPD / BASIC LIFE ASSESSMENT PLAT

120' LANDSCAPE EASEMENT

RETAINING WALL  
WOOD FENCE

**EASEMENT LEGEND**

	WETLAND CONSERVATION EASEMENT PER TEMPLETON RESERVE SUBPLAT DOC. NO. R2014-013643
	STORMWATER DETENTION EASEMENT PER TEMPLETON RESERVE SUBPLAT DOC. NO. R2014-013643
	PUBLIC UTILITY AND DRAINAGE EASEMENT PER TEMPLETON RESERVE SUBPLAT DOC. NO. R2014-013643
	INGRESS AND EGRESS EASEMENT PER TEMPLETON RESERVE SUBPLAT DOC. NO. R2014-013643

**REVISIONS:**

DATE	BY	DESCRIPTION	DATE	BY	DESCRIPTION

DRAWN BY: A.J.  
CHECKED BY: B.S.  
APPROVED BY: J.G.



**ENGINEERING RESOURCE ASSOCIATES, INC.**  
CONSULTING ENGINEERS, SCIENTISTS & SURVEYORS  
35701 WEST AVENUE, SUITE 150 WARRENVILLE, ILLINOIS 60555  
PHONE (630) 393-3060 FAX (630) 393-2152  
10 S. RIVERSIDE PLAZA, SUITE 1800 CHICAGO, ILLINOIS 60606  
PHONE (312) 683-0110 FAX (312) 474-6099  
3002 CROSSING COURT CHAMPAIGN, ILLINOIS 61822  
PHONE (217) 351-6268 FAX (217) 355-1902

TEMPLETON RESERVE

TITLE: **14 TEMPLETON DRIVE OAKBROOK, ILLINOIS**

SCALE: 1"=30'  
DATE: MARCH, 2015  
JOB NO: 250808  
SHEET 1 OF 1

Z:\TK Templeton Woods LLC\250808.DD (Templeton Woods, Oak Brook)\CAD\Vacant Lot Plats\Lot 9.dwg Updated by: sjohnson 3/19/2015