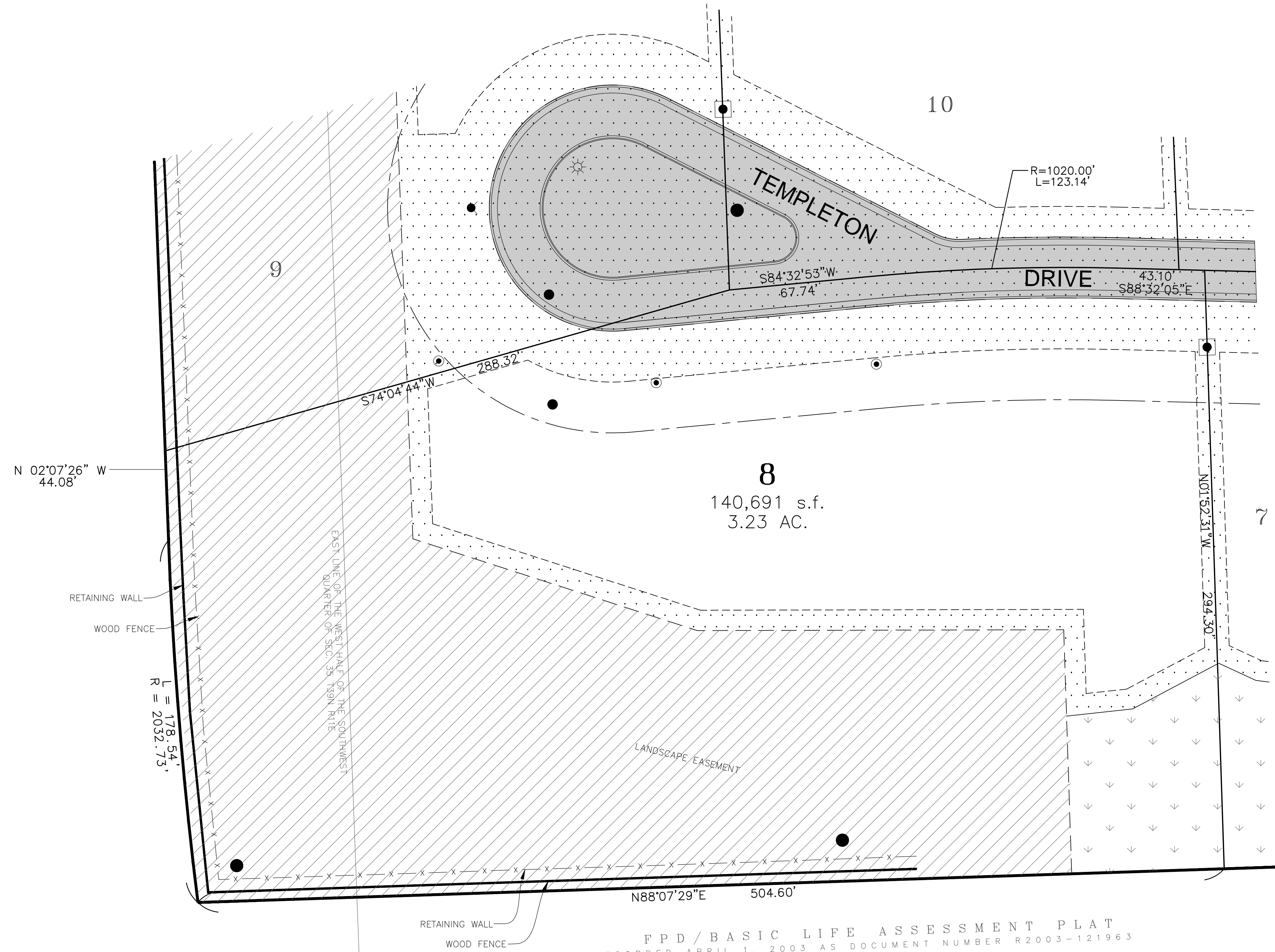
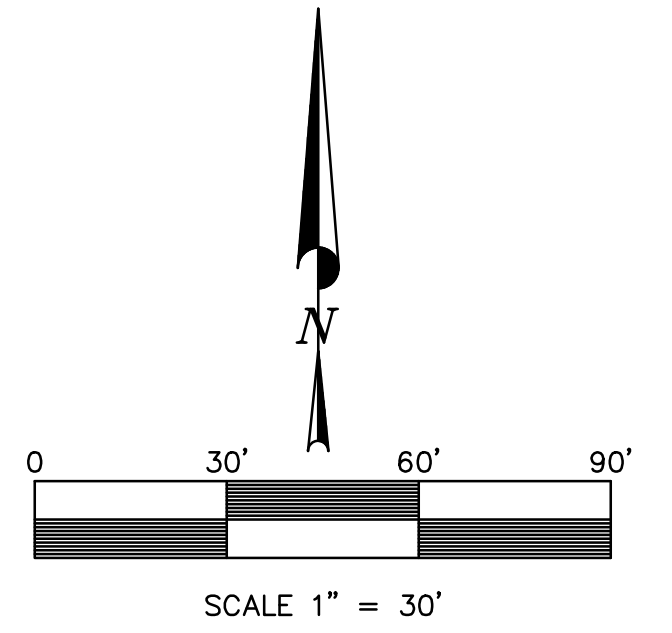


# 15 TEMPLETON DRIVE

LOT 8 IN TEMPLETON RESERVE PLAT OF SUBDIVISION, BEING A SUBDIVISION OF THOSE PARTS OF THE NORTHEAST AND SOUTHWEST QUARTERS OF THE SOUTHWEST QUARTER OF SECTION 35, ALL IN TOWNSHIP 39 NORTH, RANGE 11 EAST OF THE THIRD PRINCIPAL MERIDIAN, ACCORDING TO THE PLAT THEREOF RECORDED FEBRUARY 18, 2014 AS DOCUMENT NUMBER R2014-013643, ALL IN DUPAGE COUNTY, ILLINOIS.



FPD / BASIC LIFE ASSESSMENT PLAT  
RECORDED APRIL 1, 2003 AS DOCUMENT NUMBER R2003-121963

**EASEMENT LEGEND**

	WETLAND CONSERVATION EASEMENT PER TEMPLETON RESERVE SUBPLAT DOC. NO. R2014-013643
	STORMWATER DETENTION EASEMENT PER TEMPLETON RESERVE SUBPLAT DOC. NO. R2014-013643
	PUBLIC UTILITY AND DRAINAGE EASEMENT PER TEMPLETON RESERVE SUBPLAT DOC. NO. R2014-013643
	INGRESS AND EGRESS EASEMENT PER TEMPLETON RESERVE SUBPLAT DOC. NO. R2014-013643

**REVISIONS:**

DATE	BY	DESCRIPTION	DATE	BY	DESCRIPTION

**DRAWN BY:** A.J.  
**CHECKED BY:** B.S.  
**APPROVED BY:** J.G.

**ENGINEERING RESOURCE ASSOCIATES, INC.**  
CONSULTING ENGINEERS, SCIENTISTS & SURVEYORS

35701 WEST AVENUE, SUITE 150  
WARRENVILLE, ILLINOIS 60555  
PHONE (630) 393-3060  
FAX (630) 393-2152

10 S. RIVERSIDE PLAZA, SUITE 1800  
CHICAGO, ILLINOIS 60606  
PHONE (312) 683-0110  
FAX (312) 474-6099

3002 CROSSING COURT  
CHAMPAIGN, ILLINOIS 61822  
PHONE (217) 351-6268  
FAX (217) 355-1902

**TEMPLETON RESERVE**

**TITLE:**  
**15 TEMPLETON DRIVE  
OAKBROOK, ILLINOIS**

**SCALE:** 1"=30'  
**DATE:** MARCH, 2015  
**JOB NO:** 250808  
**SHEET 1 OF 1**

Z:\TK Templeton Woods LLC\250808.DD (Templeton Woods, Oak Brook)\CAD\Vacant Lot Plots\Lot 8.dwg Updated by: ajpanson 3/19/2015