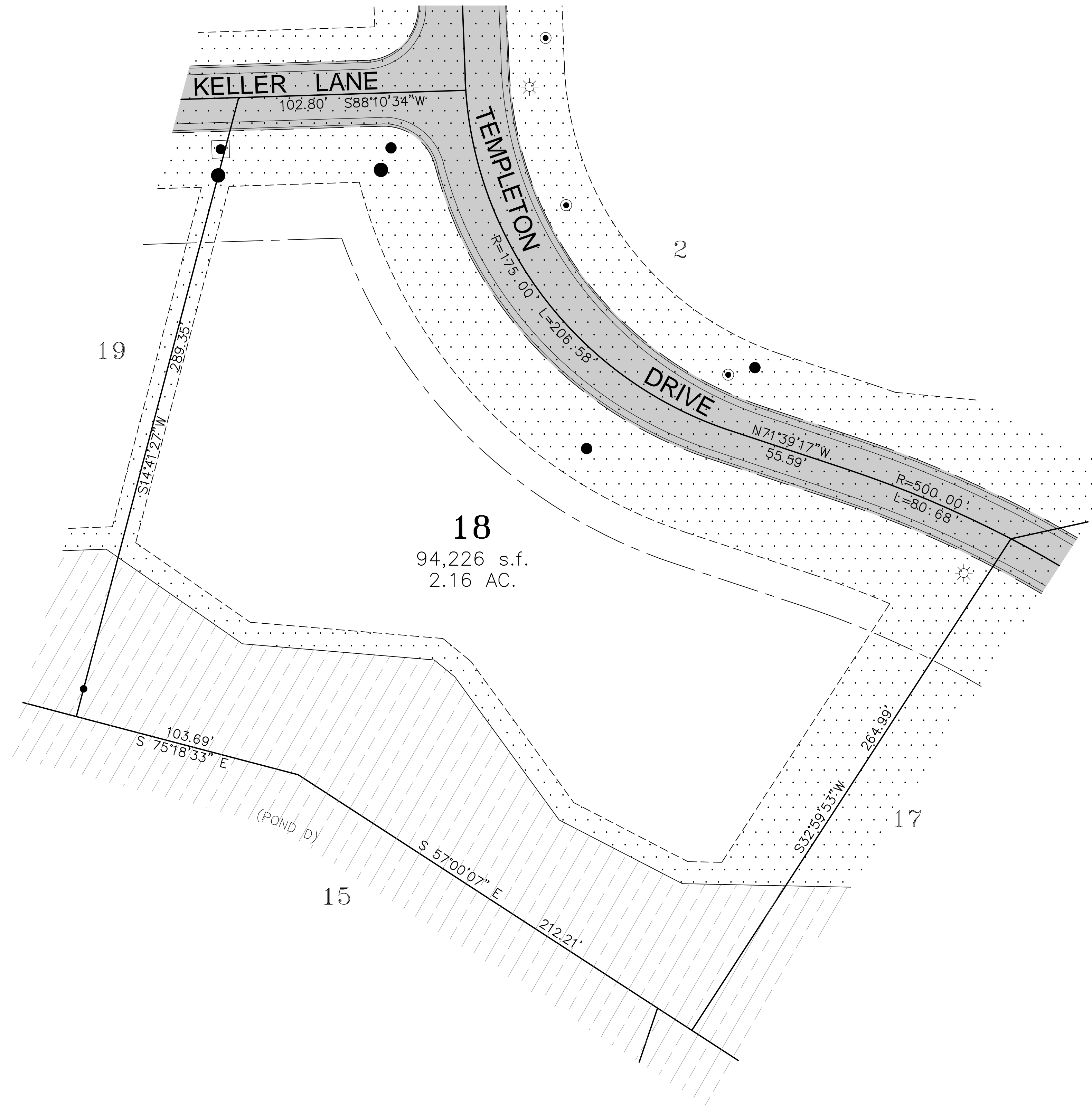
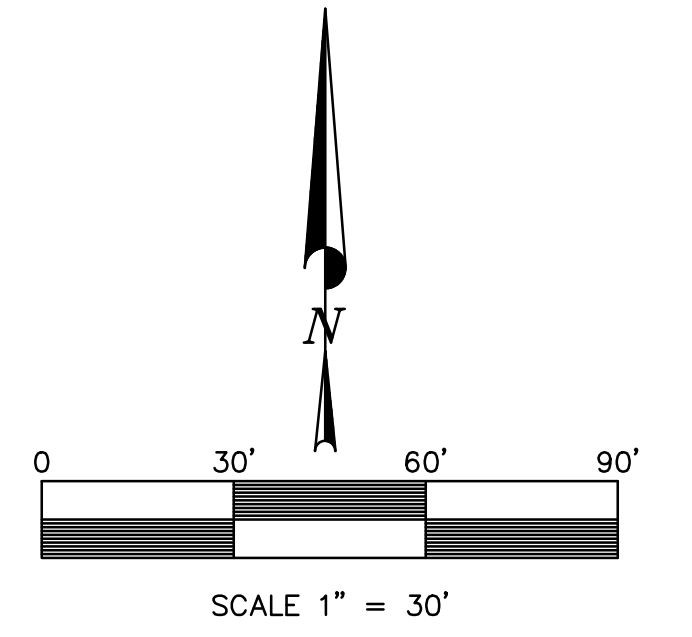


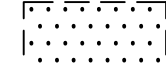



2 TEMPLETON DRIVE

LOT 18 IN TEMPLETON RESERVE PLAT OF SUBDIVISION, BEING A SUBDIVISION OF THOSE PARTS OF THE NORTHEAST AND SOUTHEAST QUARTERS OF THE SOUTHWEST QUARTER OF SECTION 35, ALL IN TOWNSHIP 39 NORTH, RANGE 11 EAST OF THE THIRD PRINCIPAL MERIDIAN, ACCORDING TO THE PLAT THEREOF RECORDED FEBRUARY 18, 2014 AS DOCUMENT NUMBER R2014-013643, ALL IN DUPAGE COUNTY, ILLINOIS.

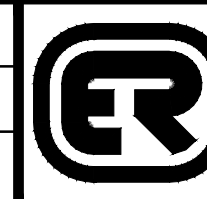


EASEMENT LEGEND

	WETLAND CONSERVATION EASEMENT PER TEMPLETON RESERVE SUBPLAT DOC. NO. R2014-013643
	STORMWATER DETENTION EASEMENT PER TEMPLETON RESERVE SUBPLAT DOC. NO. R2014-013643
	PUBLIC UTILITY AND DRAINAGE EASEMENT PER TEMPLETON RESERVE SUBPLAT DOC. NO. R2014-013643
	INGRESS AND EGRESS EASEMENT PER TEMPLETON RESERVE SUBPLAT DOC. NO. R2014-013643

REVISIONS:					
DATE	BY	DESCRIPTION	DATE	BY	DESCRIPTION

DRAWN BY: A.J.
CHECKED BY: B.S.
APPROVED BY: J.G.



ENGINEERING RESOURCE ASSOCIATES, INC.
CONSULTING ENGINEERS, SCIENTISTS & SURVEYORS
35701 WEST AVENUE, SUITE 150
WARRENVILLE, ILLINOIS 60555
PHONE (630) 393-3060
FAX (630) 393-2152

10 S. RIVERSIDE PLAZA, SUITE 1800
CHICAGO, ILLINOIS 60606
PHONE (312) 683-0110
FAX (312) 474-6099

3002 CROSSING COURT
CHAMPAIGN, ILLINOIS 61822
PHONE (217) 351-6268
FAX (217) 355-1902

TEMPLETON RESERVE

TITLE: **2 TEMPLETON DRIVE
OAKBROOK, ILLINOIS**

SCALE: 1"=30'
DATE: MARCH, 2015
JOB NO: 250808
SHEET 1 OF 1

Z:\TK Templeton Woods LLC\250808.DD (Templeton Woods, Oak Brook)\CAD\Drawings\Lot 18.dwg Updated by: ajohnson 3/19/2015