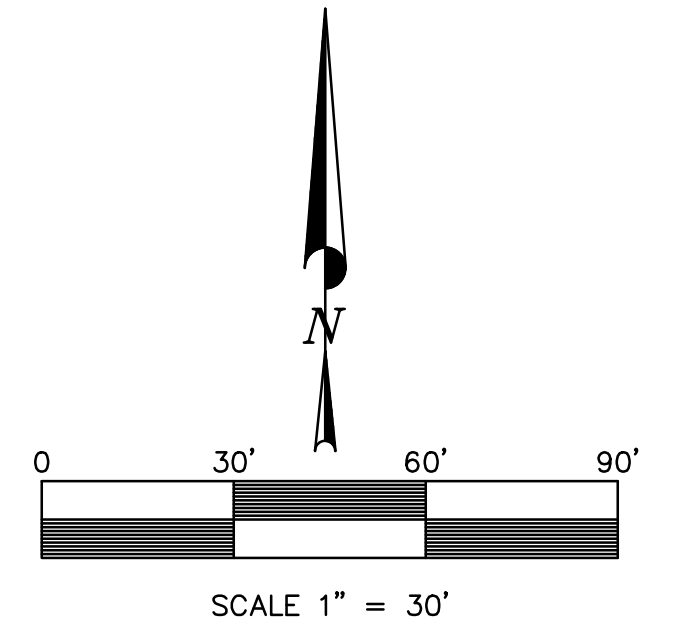
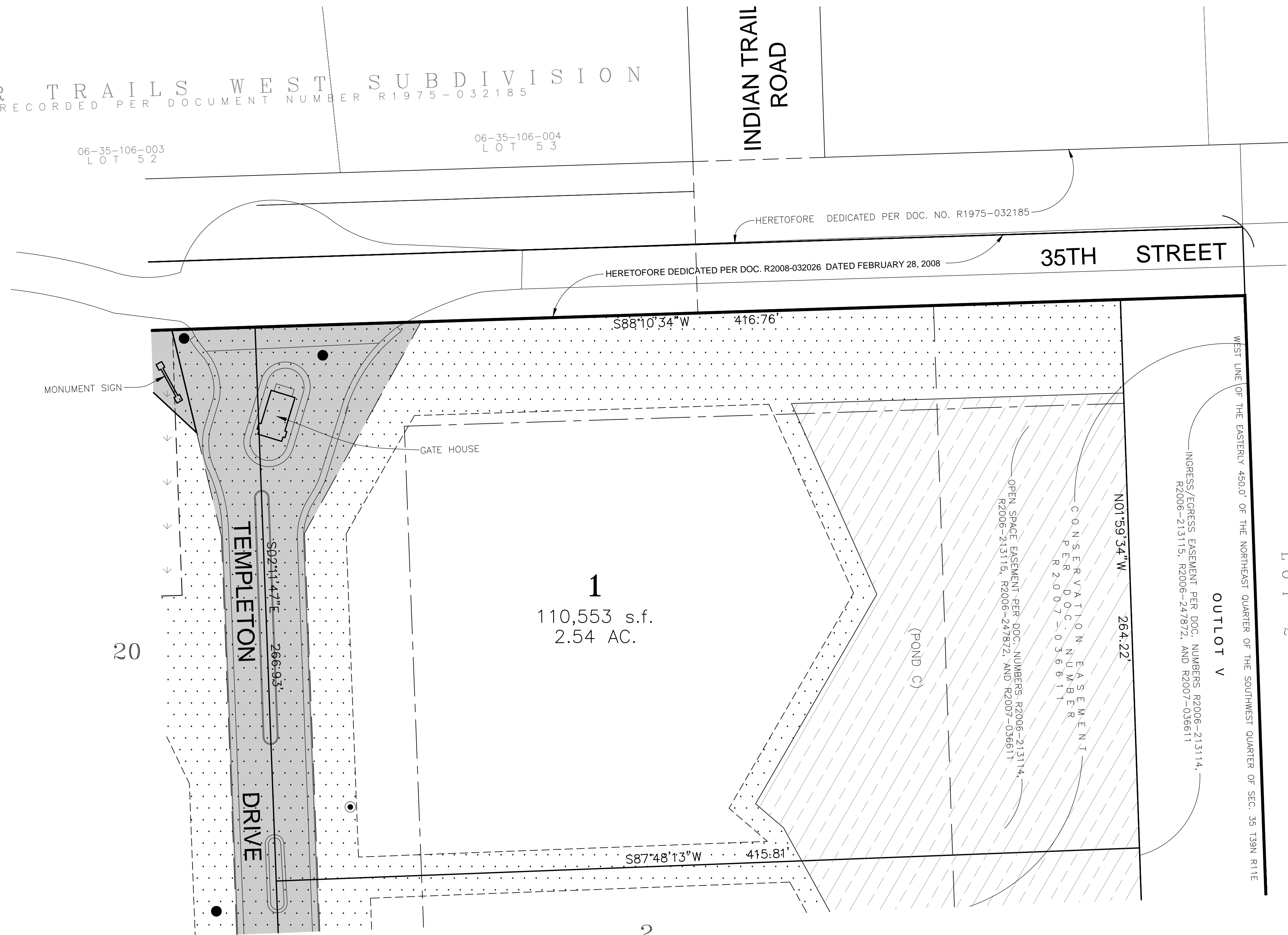


# 1 TEMPLETON DRIVE

LOT 1 IN TEMPLETON RESERVE PLAT OF SUBDIVISION, BEING A SUBDIVISION OF THOSE PARTS OF THE NORTHEAST AND SOUTHEAST QUARTERS OF THE SOUTHWEST QUARTER OF SECTION 35, ALL IN TOWNSHIP 39 NORTH, RANGE 11 EAST OF THE THIRD PRINCIPAL MERIDIAN, ACCORDING TO THE PLAT THEREOF RECORDED FEBRUARY 18, 2014 AS DOCUMENT NUMBER R2014-013643, ALL IN DUPAGE COUNTY, ILLINOIS.

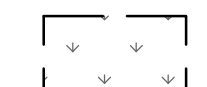
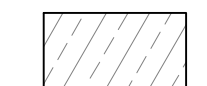
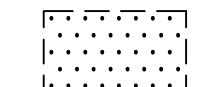



HUNTER TRAILS WEST SUBDIVISION  
RECORDED PER DOCUMENT NUMBER R1975-032185



OAK BROOK FARMS  
ASSESSMENT PLAT  
06-35-301-011  
LOT 2

### EASEMENT LEGEND

-  WETLAND CONSERVATION EASEMENT PER TEMPLETON RESERVE SUBPLAT DOC. NO. R2014-013643
-  STORMWATER DETENTION EASEMENT PER TEMPLETON RESERVE SUBPLAT DOC. NO. R2014-013643
-  PUBLIC UTILITY AND DRAINAGE EASEMENT PER TEMPLETON RESERVE SUBPLAT DOC. NO. R2014-013643
-  INGRESS AND EGRESS EASEMENT PER TEMPLETON RESERVE SUBPLAT DOC. NO. R2014-013643

REVISIONS:					
DATE	BY	DESCRIPTION	DATE	BY	DESCRIPTION

DRAWN BY: A.J.  
CHECKED BY: B.S.  
APPROVED BY: J.G.



**ENGINEERING RESOURCE ASSOCIATES, INC.**  
CONSULTING ENGINEERS, SCIENTISTS & SURVEYORS  
35701 WEST AVENUE, SUITE 150  
WARRENVILLE, ILLINOIS 60555  
PHONE (630) 393-3060  
FAX (630) 393-2152

10 S. RIVERSIDE PLAZA, SUITE 1800  
CHICAGO, ILLINOIS 60606  
PHONE (312) 683-0110  
FAX (312) 474-6099

3002 CROSSING COURT  
CHAMPAIGN, ILLINOIS 61822  
PHONE (217) 351-6268  
FAX (217) 355-1902

TEMPLETON RESERVE

TITLE:  
**1 TEMPLETON DRIVE  
OAKBROOK, ILLINOIS**

SCALE: 1"=30'  
DATE: MARCH, 2015  
JOB NO: 250808  
SHEET 1 OF 1