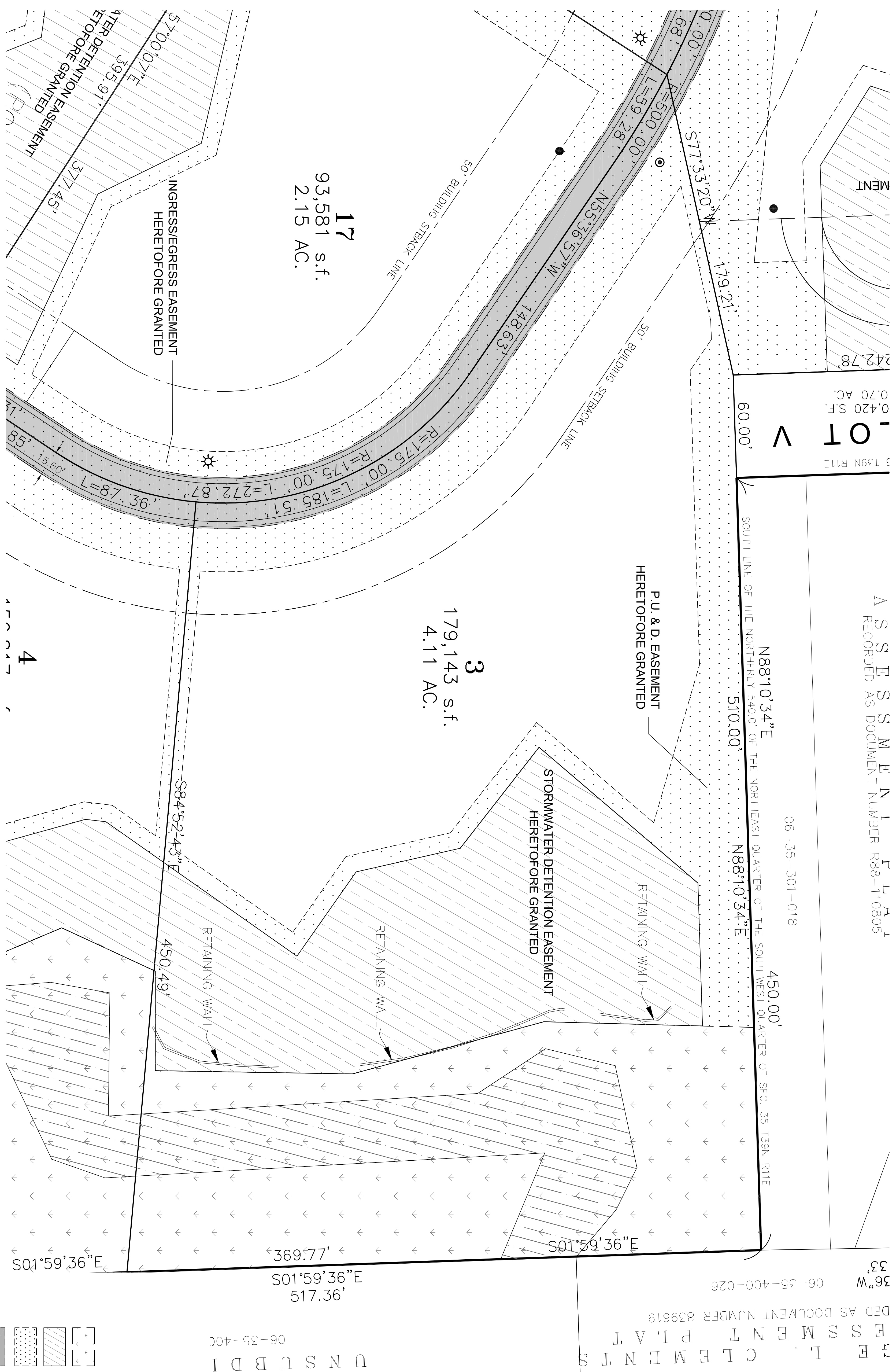
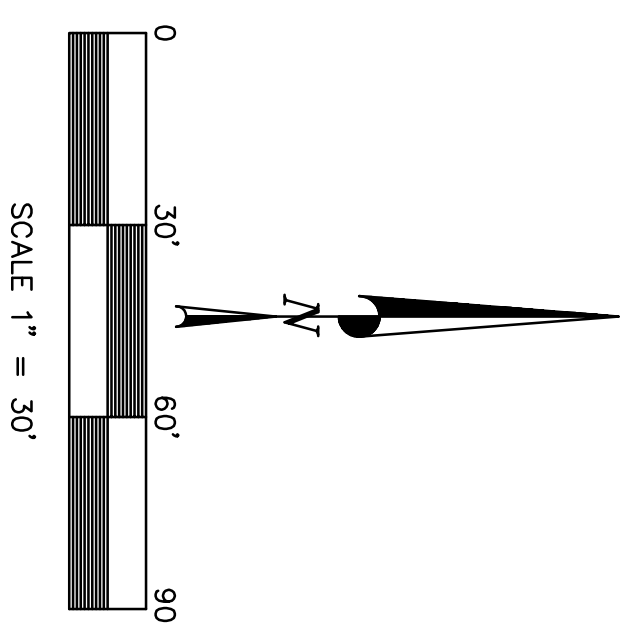


5 TEMPLETON DRIVE

LOT 3 IN TEMPLETON RESERVE PLAT OF SUBDIVISION, BEING A SUBDIVISION OF THOSE PARTS OF THE NORTH, RANGE 11 EAST OF THE THIRD PRINCIPAL MERIDIAN, ACCORDING TO THE PLAT THEREOF RECORDED FEBRUARY 18, 2014 AS DOCUMENT NUMBER R2014-013643, ALL IN DUPAGE COUNTY, ILLINOIS.

A S S E S S M E N T P L A T
RECORDED AS DOCUMENT NUMBER R88-110805



EASEMENT LEGEND

	WETLAND CONSERVATION EASEMENT PER TEMPLETON RESERVE SUBPLAT DOC. NO. R2014-013643
	STORMWATER DETENTION EASEMENT PER TEMPLETON RESERVE SUBPLAT DOC. NO. R2014-013643
	PUBLIC UTILITY AND DRAINAGE EASEMENT PER TEMPLETON RESERVE SUBPLAT DOC. NO. R2014-013643
	INGRESS AND EGRESS EASEMENT PER TEMPLETON RESERVE SUBPLAT DOC. NO. R2014-013643

REVISIONS:

DATE	BY	DESCRIPTION

ENGINEERING RESOURCE ASSOCIATES, INC.
 35701 WEST AVENUE, SUITE 150
 WARRICKVILLE, ILLINOIS 60555
 PHONE (630) 293-5060
 FAX (630) 293-2152

CHIEF ENGINEER A.L.
DESIGNED BY B.S.
APPROVED BY J.G.

TEMPLETON RESERVE

5 TEMPLETON DRIVE OAKBROOK, ILLINOIS

SCALE: 1" = 30'
 DATE: MARCH, 2015
 JOB NO.: 250808
 SHEET: 1 OF 1